



**RIDGEFIELD PARKS BOARD
MEETING AGENDA**

**Wednesday, May 13, 2026
RACC - Columbia Assembly Room
510 Pioneer Street, Ridgefield, WA 98642**

I. GENERAL SESSION CALL TO ORDER - 6:30 PM

- 1. Flag Salute**
- 2. Roll Call**
- 3. Late changes to the agenda**

II. PUBLIC COMMENT

Anyone requesting to speak to the Board regarding all items not subject to a specific Public Hearing may come forward at this time. Please state your name and limit comments to three minutes. Written comments may be submitted to the Clerk prior to the meeting.

III. CONSENT AGENDA

- 1. Approval of Minutes from the March 11, 2026 Meeting**

IV. PRESENTATION

- 1. 2026 RCO WWRP Local Parks Grant Proposal and Presentation**
- 2. 2026 Parks, Recreation, and Open Space (PROS) Plan - Overview of Scope of Work**

V. BUSINESS

- 1. Motion - Approval of 2026 Parks Board Work Plan Quarter 1 Report - Corey Crownhart, Park Manager**

VI. PUBLIC COMMENT

Anyone requesting to speak to the Board regarding all items not subject to a specific Public Hearing may come forward at this time. Please state your name and limit comments to three minutes. Written comments may be submitted to the Clerk prior to the meeting.

VII. STAFF REPORTS

VIII. FROM THE BOARD

IX. ADJOURN

**CITY OF RIDGEFIELD
REQUEST FOR BOARD ACTION**

MEETING DATE: May 13, 2026

AGENDA ITEM NAME: Approval of Minutes from the March 11, 2026 Meeting

SUMMARY/BACKGROUND:

STAFF CONTACT:

ATTACHMENTS:

1. 3.11.26 Parks Board Minutes



**CITY OF RIDGEFIELD, WASHINGTON
PARKS BOARD MEETING MINUTES
MARCH 11, 2026**

Regular Meeting - 6:30 PM

I. GENERAL SESSION CALL TO ORDER - 6:30 PM

- 1. Flag Salute**
- 2. Roll Call**

<p>Present: Chair Brigid Taylor Vice Chair Sandy Schill Board Member Beth Bicknell Board Member Alex Earl Board Member John Rafanelli Board Member Jessica Pace Board Member Elianna Galvan</p> <p>Absent:</p>
--

3. Late changes to the agenda

None.

II. PUBLIC COMMENT

Anyone requesting to speak to the Board regarding all items not subject to a specific Public Hearing may come forward at this time. Please state your name and limit comments to three minutes. Written comments may be submitted to the Clerk prior to the meeting.

III. CONSENT AGENDA

1. Approval of Minutes from the January 14, 2026 Meeting

A motion was made and passed to approve the minutes as written from the January 14, 2026, Parks Board meeting.

<p>RESULT: ADOPTED (UNANIMOUS)</p> <p>MOVER: Board Member Rafanelli</p> <p>SECONDER: Vice Chair Schill</p> <p>AYES: Chair Taylor, Vice Chair Schill, Board Member Bicknell, Board Member Earl, Board Member Rafanelli, Board Member Pace, Board Member Galvan</p>

IV. BUSINESS

1. Discussion - Parks Revenue Program Update - Corey Crownhart, Park Manager

Corey Crownhart discussed the adopted 2025 Budget allocated funding to develop philanthropic funding for the Ridgefield Community and Recreation Center (RCRC) and the Ridgefield Outdoor Recreation Complex (RORC) through the implementation of at Parks Revenue Program develop

2. Discussion - State of the City Update - Corey Crownhart, Park Manager

Staff announced the Parks Board will be hosting a dedicated table to share information, showcase current initiatives, and connect with residents regarding ongoing and future parks projects at the annual State of the City event being held on March 17th. Staff provided an overview of the event structure, themes, and materials that will be available to ensure Board members are prepared to effectively engage with the community during the event.

V. PUBLIC COMMENT

Anyone requesting to speak to the Board regarding all items not subject to a specific Public Hearing may come forward at this time. Please state your name and limit comments to three minutes. Written comments may be submitted to the Clerk prior to the meeting.

VI. STAFF REPORTS

Staff announced there would not be a Parks Board meeting in April due to Spring Break. The next Parks Board meeting will be May 13, 2026.

VII. FROM THE BOARD

VIII. ADJOURN

Kim Strickler, Parks Board Clerk

Brigid Taylor, Chair

**CITY OF RIDGEFIELD
REQUEST FOR BOARD ACTION**

MEETING DATE: May 13, 2026

AGENDA ITEM NAME: 2026 RCO WWRP Local Parks Grant Proposal and Presentation

SUMMARY/BACKGROUND:

Horn's Corner Park has an approved Master Plan, which was reviewed and approved by the Parks Board and City Council in 2022. The plan established the long-term vision for developing Horn's Corner into a community park that serves Ridgefield's growing population and provides expanded access to high-quality recreation opportunities.

The City is preparing a 2026 grant application to the Washington State Recreation and Conservation Office through the Washington Wildlife and Recreation Program Local Parks category for the Horn's Corner Inclusive-Design Playground project. This application represents the next step in advancing the approved Master Plan and helping move the park from concept toward implementation.

The proposed project would add an inclusive-design playground that supports children and families of varying ages, abilities, and mobility levels. This agenda item is informational only and provides Parks Board with an overview of the grant application, project purpose, community benefit, and upcoming RCO presentation. No action is requested.

STAFF CONTACT: Corey Crownhart, Park Manager

ATTACHMENTS:

1. RCO-26-1445-HornsCornerInclusivePlayground-2026.05.06



Horn's Corner Inclusive Playground

RCO WWRP-Local Parks | Project: 26-1445

Sponsor: City of Ridgefield, WA
May 2026



Introduction

Grant Proposal Overview

- Inclusive Design Playground Addition to Horn's Corner Park
- \$375,000 Request (\$750,000 Project Budget)
- Projected Completion Date: 12/31/2028
- Project Focus: Accessibility and User Experience

Recreational Opportunities

- Expanded access for children of all abilities
- Social connection and cooperative play
- First inclusive design playground in North Clark County
- Therapeutic and developmental benefits



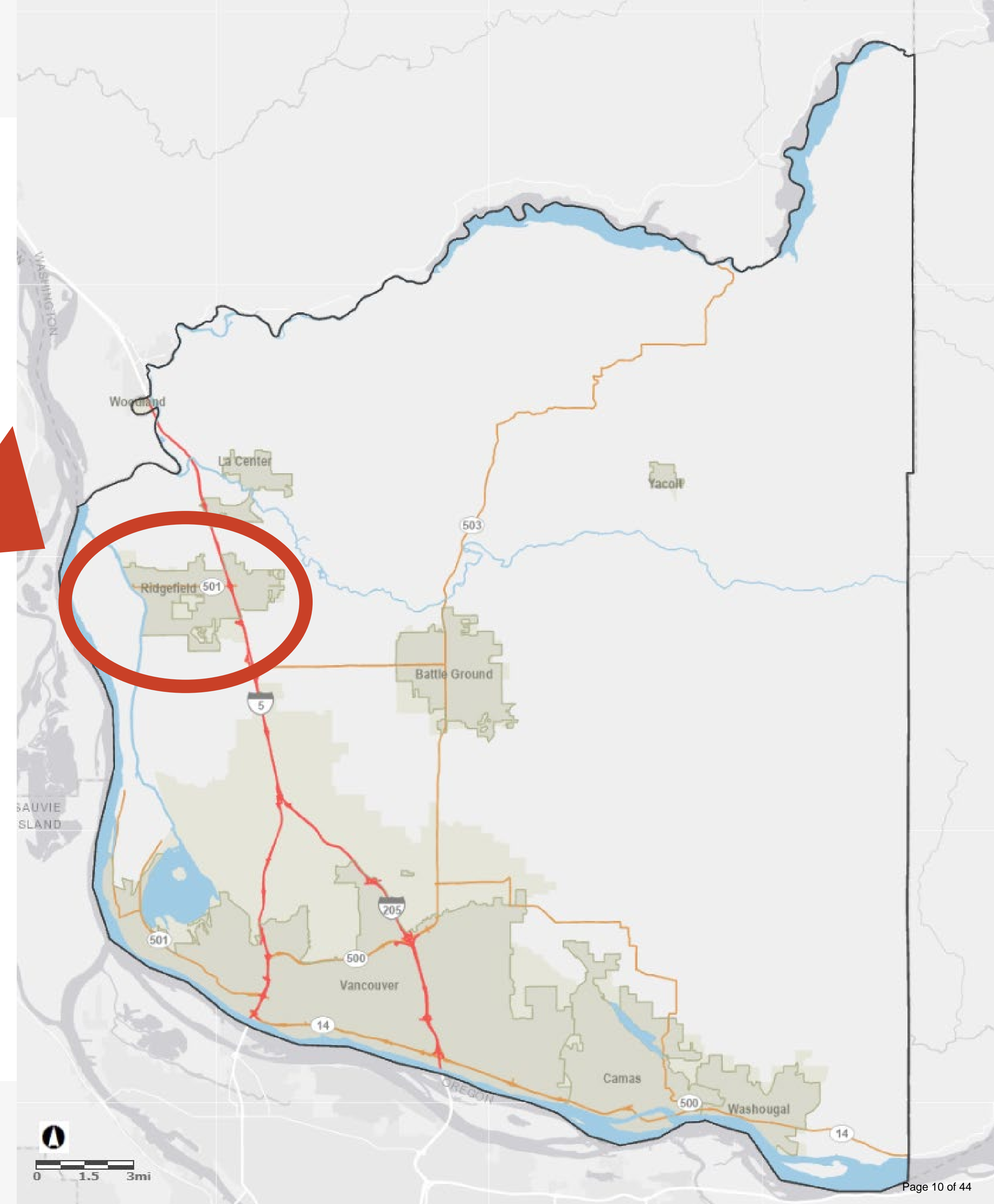
Regional Context

Location

- North Clark County
- Along I-5 Transportation Corridor
- Adjacent to the Ridgefield National Wildlife Refuge operated by US Fish and Wildlife

Nearby Relevant Cities

- Vancouver, WA – 12 Miles South
- Portland, OR – 17 Miles South
- Longview, WA – 25 Miles North



1. Need: Local Priorities

Identified Need

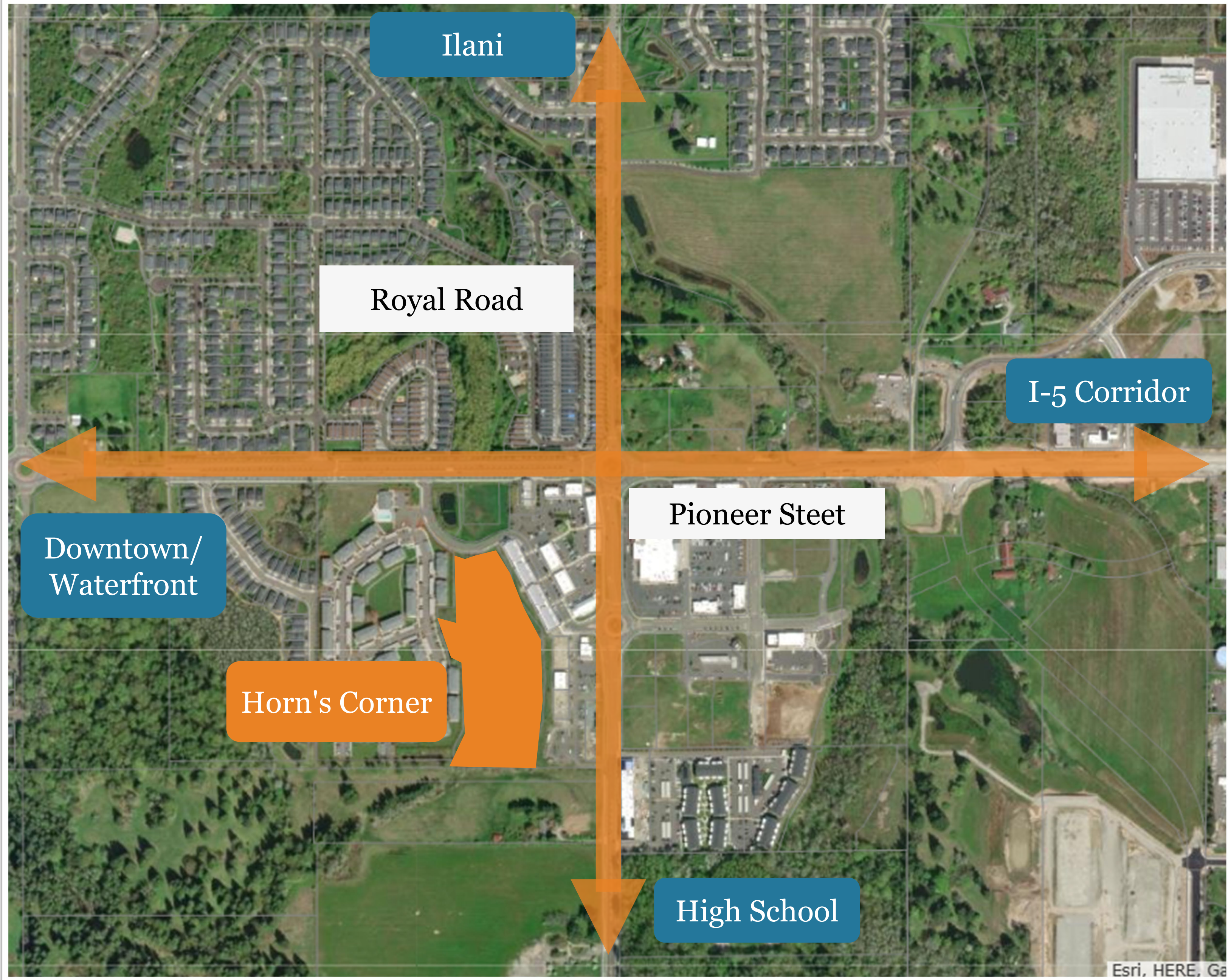
Hub of North County

The Hub of Ridgefield

- Royal Road and Pioneer Street Make up the de facto Center of Ridgefield, connecting the drivers of civic life, business, education, and our home.

Strategic Placement

- An inclusive-design playground was deliberately chosen to be at this intersection not only to serve Ridgefield but the broader North County that comes to this hub.



1.Need: Local Priorities

Identified Need

Health Care Locations

Health Care Services

- Vancouver Clinic, Legacy Medical, and Peace Health are all either opening clinics or expanding to existing to meet the need.

Childcare Connection

- At least two larger scale Childcare Centers are opening in the next year to support the growth of our community.



1.Need: Local Priorities

Identified Need

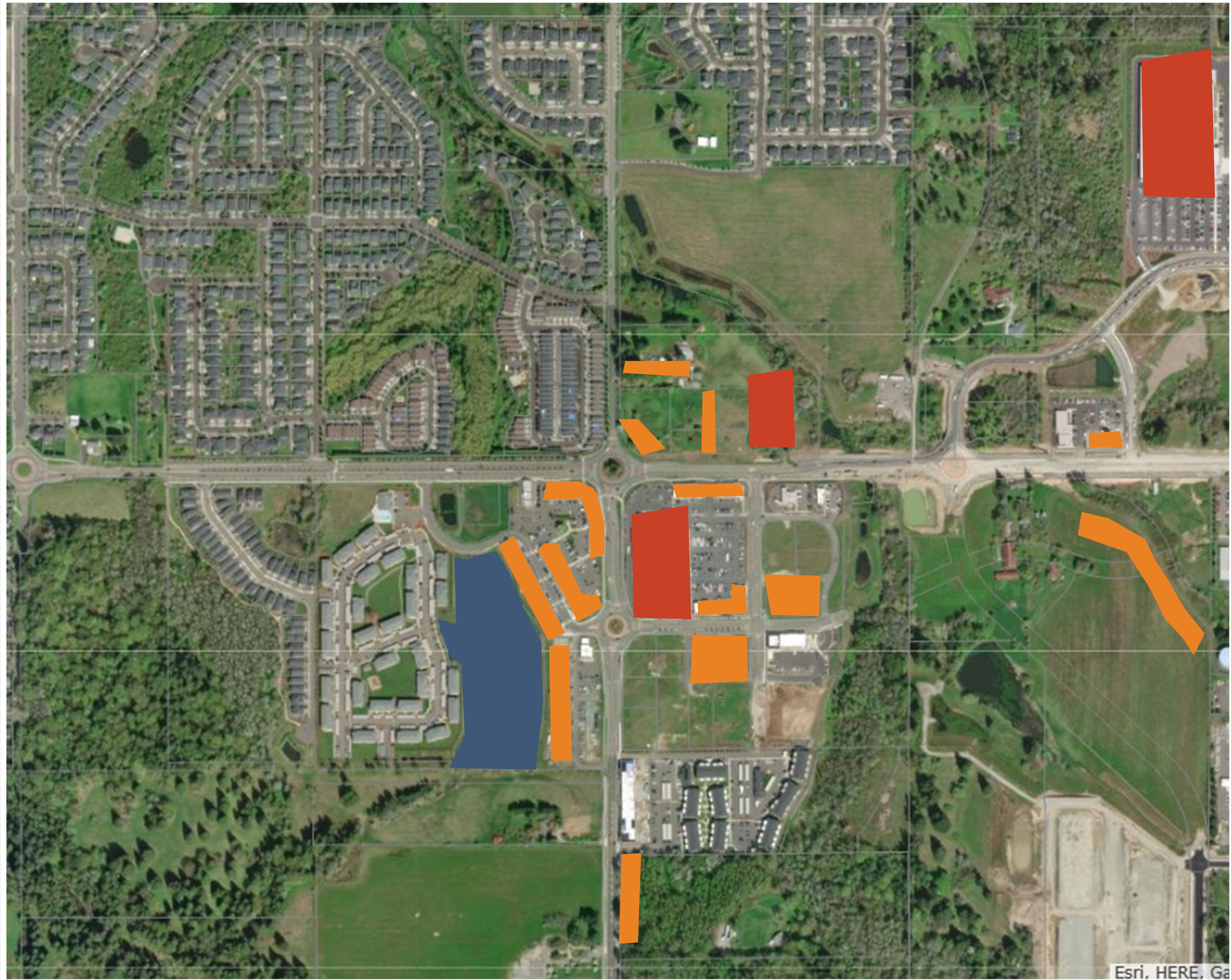
Services/Small Business

Grocery Stores

- The 3 grocery stores for Ridgefield are all within this Hub:
 - Costco
 - Rosauers Supermarkets
 - Grocery Outlet (Opening 2027)

Small Business Connection

- There are dozens of small businesses, retailers, bookshops, coffee shops, and various services within walking distance.



1.Need: Local Priorities

Identified Need

High-Density Housing

Apartment Complexes

- There are multiple, and more apartment complexes coming to the Royal Road/Pioneer Street Hub, creating a walkable and connected neighborhood.

Intentional Placement

- This location is best suited for an inclusive-design playground because many local users will not need to take their personal vehicles to get to the park.



1. Need: Local Priorities

Inventory & Conditions of Recreation

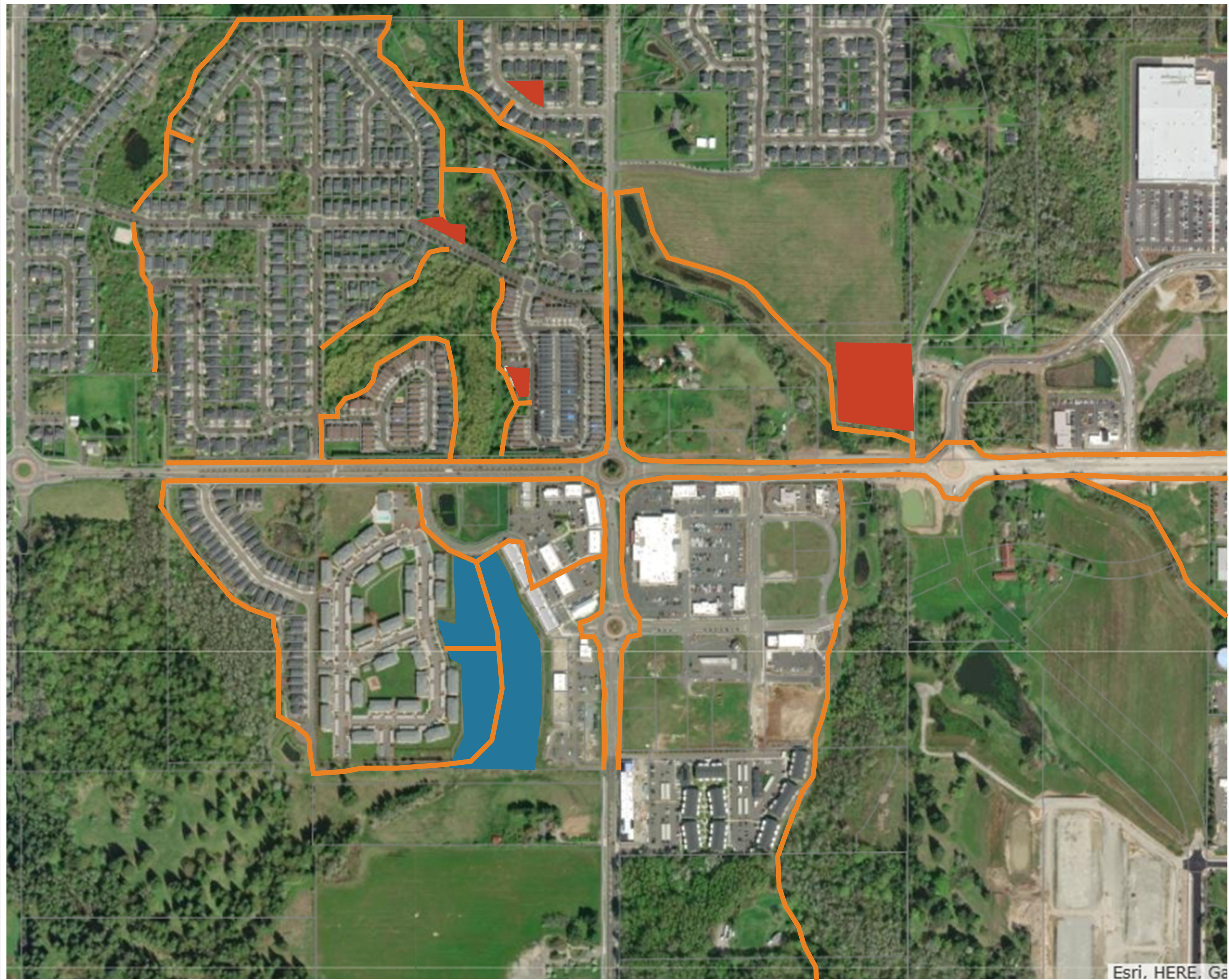
Nearby Recreation

Trail Connectivity

- Multi-modal and ADA compliant trails connect this park to nearby business, services, and homes. It's already a place for active movement for those with limited mobility.

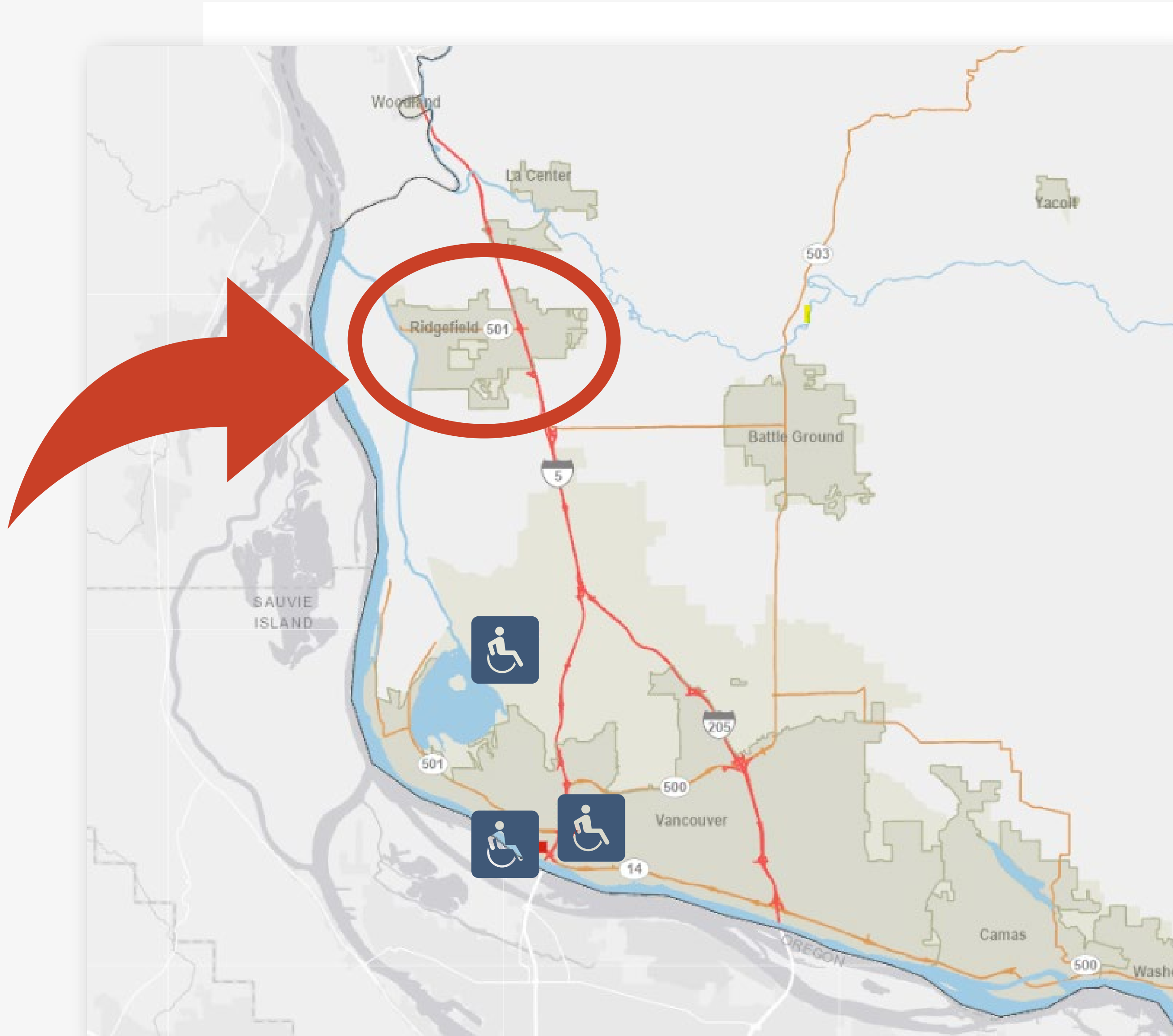
Ridgefield Community & Recreation Center

- The City is set to break ground on a 43,000 sqft community and recreation center this year.



1. Need: Local Priorities

Gaps in Access, Opportunity or Service Delivery – Proximity to Similar Inclusive-Design Facilities



Clark County Inclusive-Design Playgrounds

Ester Short Park

- Vancouver, WA – 15 Mile Drive
- Vancouver Parks, Recreation, and Cultural Services

Marshall Park

- Vancouver, WA – 14 Mile Drive
- Vancouver Parks, Recreation, and Cultural Services

Felida Community Park

- Clark County, WA – 10.5 Mile Drive
- Clark County Parks

1. Need: Local Priorities

Current and Anticipated Use – Community Demographics and Population Growth

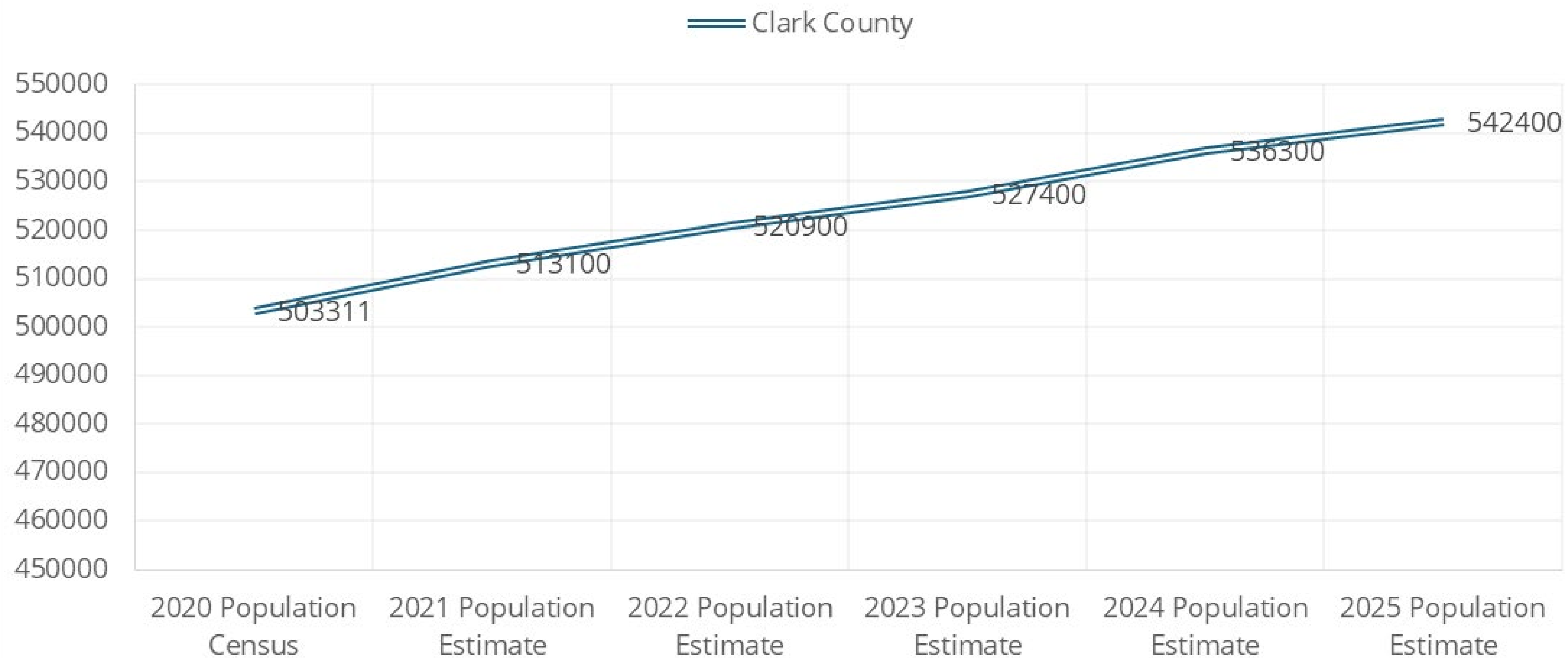


542,400 Residents



7.21% Since 2020

CLARK COUNTY POPULATION | 2020-25

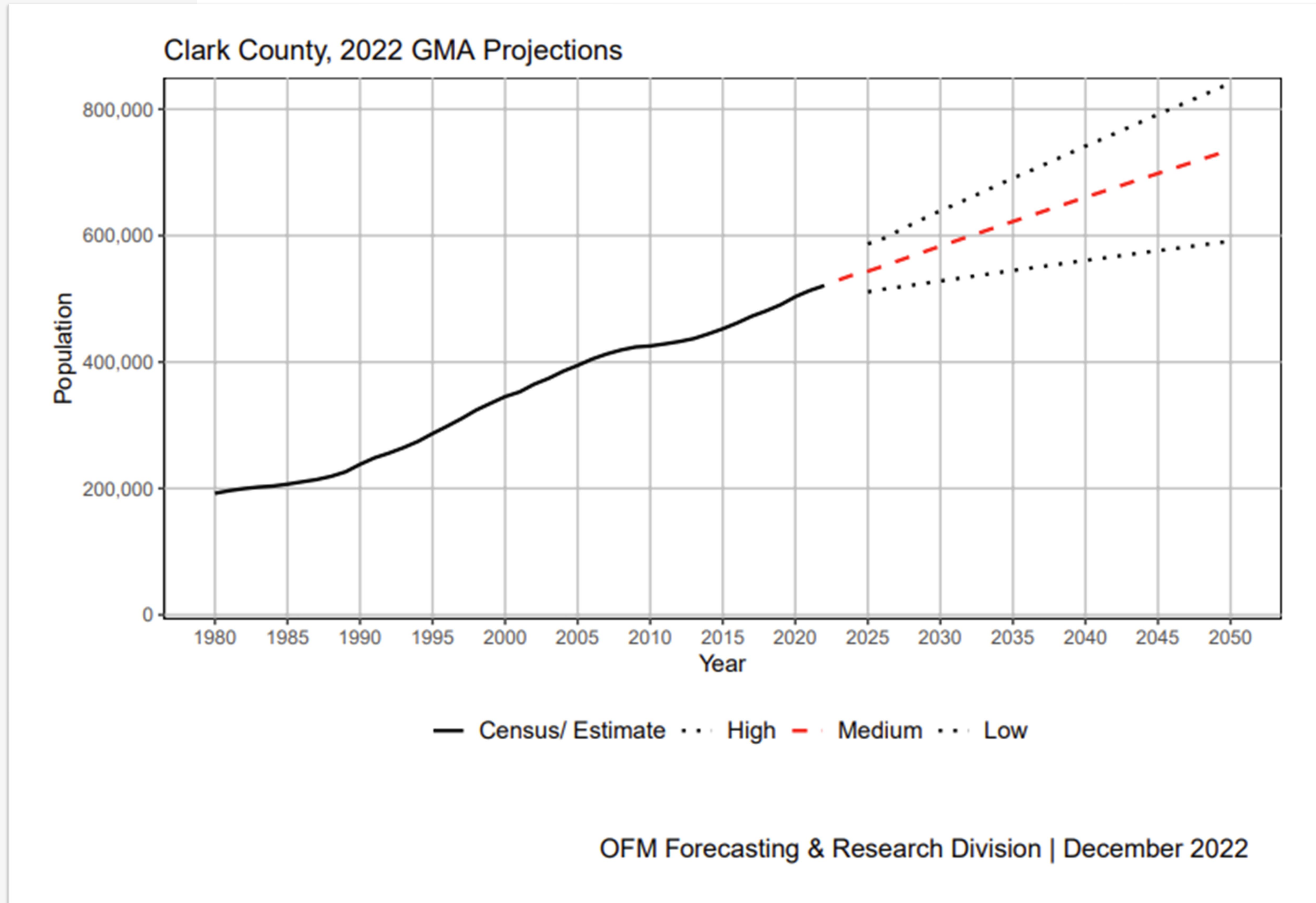


Rapid Growth

Clark County is one of the fastest growing counties in Washington State, seeing a 7.21% increase since the year 2020. (ACS2024 5-year)

1. Need: Local Priorities

Current and Anticipated Use – Community Demographics and Population Growth



Projections for More Growth

Clark County is projected to add 100,000–300,000 residents by 2050.

This continued growth will increase demand for public services, community infrastructure, parks, recreation opportunities, and other amenities that support quality of life.

1. Need: Local Priorities

Current and Anticipated Use – Community Demographics and Population Growth

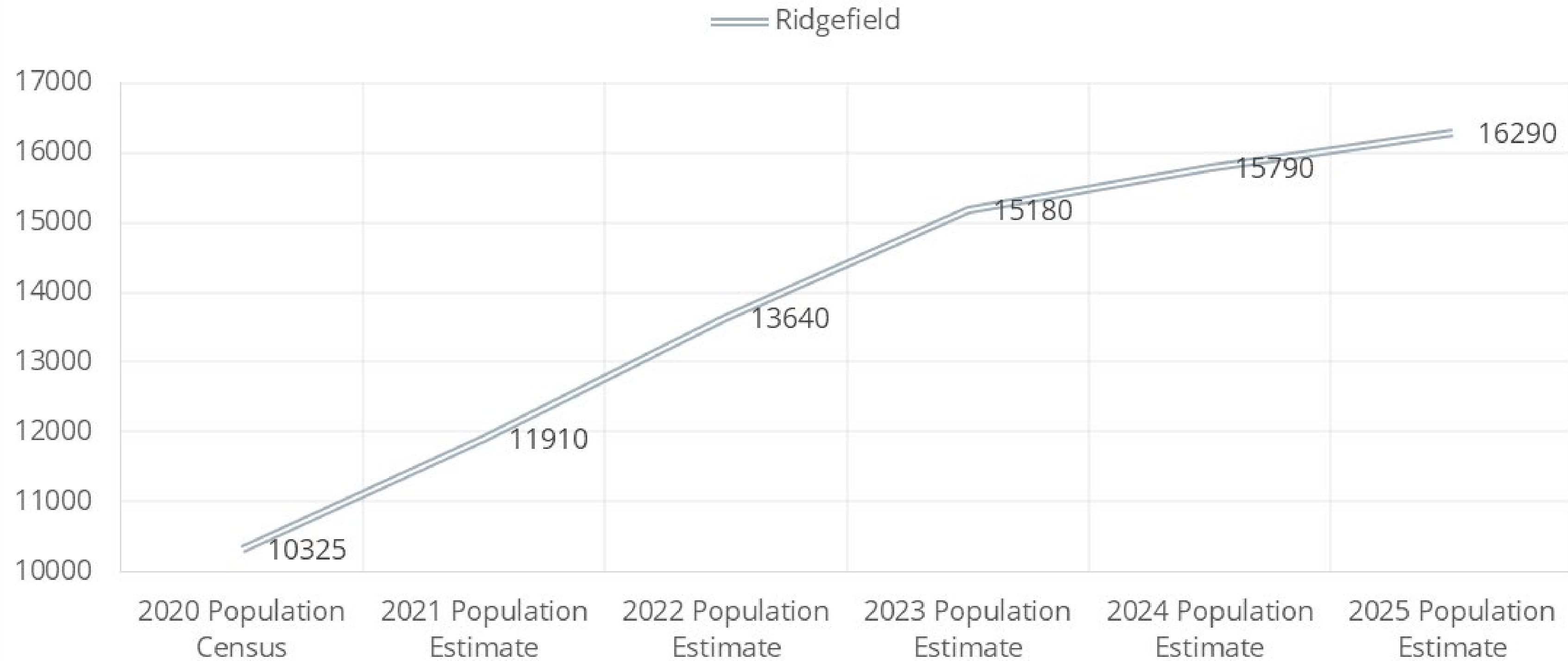


16,290 Residents



36.62% Since 2020

RIDGEFIELD POPULATION | 2020-25



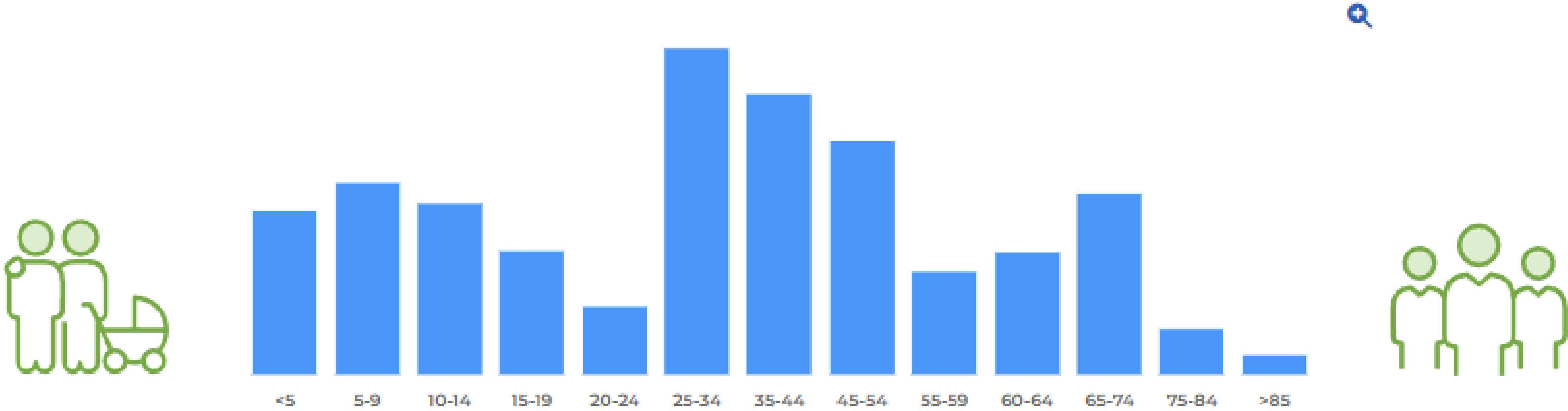
Rapid Growth

Ridgefield has been one of the fastest growing cities in Washington; growing from 6,100 residents in 2014 to 16,290 at the end of 2024, outpacing the growth of Clark County, already one of the fastest growing counties in Washington. (ACS2024 5-year)

1. Need: Local Priorities

Current and Anticipated Use – Community Demographics and Population Growth

POPULATION BY AGE GROUP



Aging affects the needs and lifestyle choices of residents. Municipalities must adjust and plan services accordingly.

** Data Source: American Community Survey 5-year estimates*

1.Need: Local Priorities

Alignment with Parks, Recreation, and Opens Spaces (PROS) Plan

Planning Alignment

PROS Plan Goals (Page 22)

- Goal 5.2: Design and maintain parks and facilities to offer universal accessibility for residents of all physical capabilities, skill levels and age as appropriate; in compliance with the Americans with Disabilities Act (ADA) Standards for Accessible Design.

City Engineering Standards

- Parks, trails, and recreation infrastructure engineering standards were adopted by the city in 2025. These standards require all community park playground facilities to adhere to the NRPA design recommendations for inclusive-design.



2. Project Scope

Recreational Opportunities – Accessible Playground

Comparable Project

Ruth Bader Ginsberg Elementary School
Vancouver Public Schools



2. Project Scope

Recreational Opportunities – Accessible Playground

Inclusive-Design Swing Set



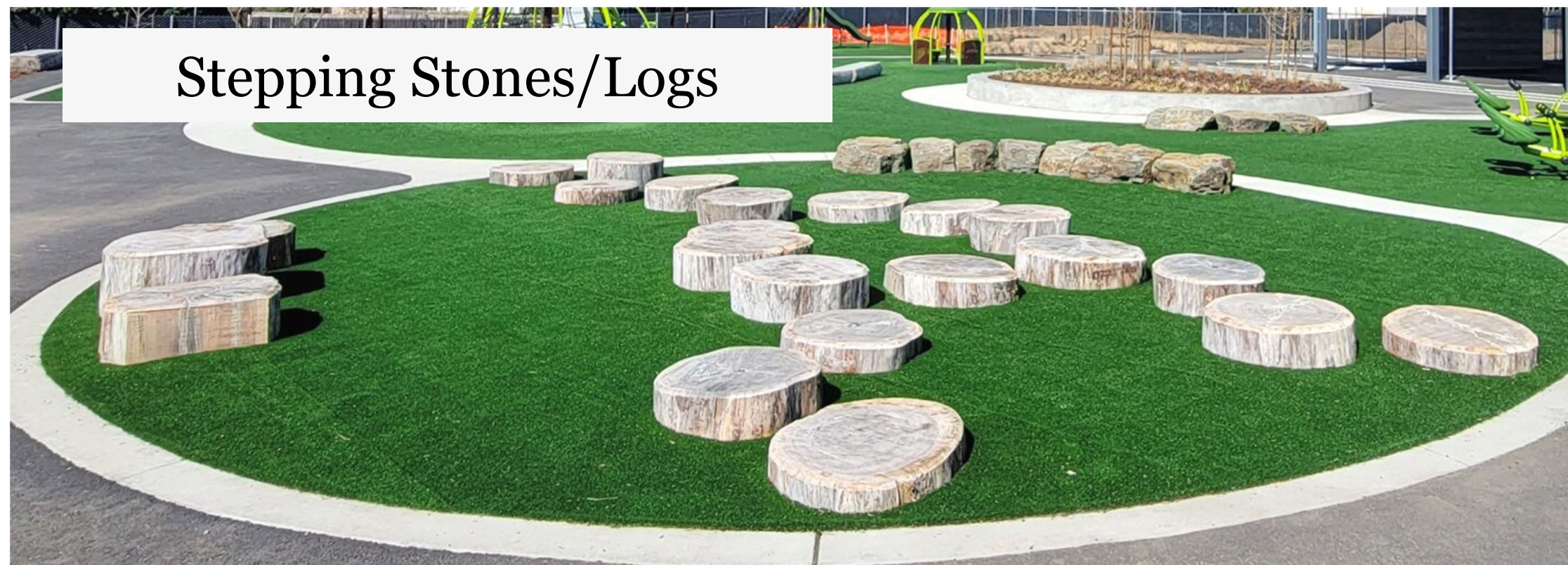
Communications Board



Inclusive Spinner



Stepping Stones/Logs



2. Project Scope

Recreational Opportunities – Natural Environment Enhancement



Multi-Modal Trails Provide Connection to Nearby Amenities and Services

Old Growth Oaks included in Playground Layout



Adjacent Wetlands Provide Places for Learning, Wildlife, and Natural Connection

5. Project Design

Existing Conditions



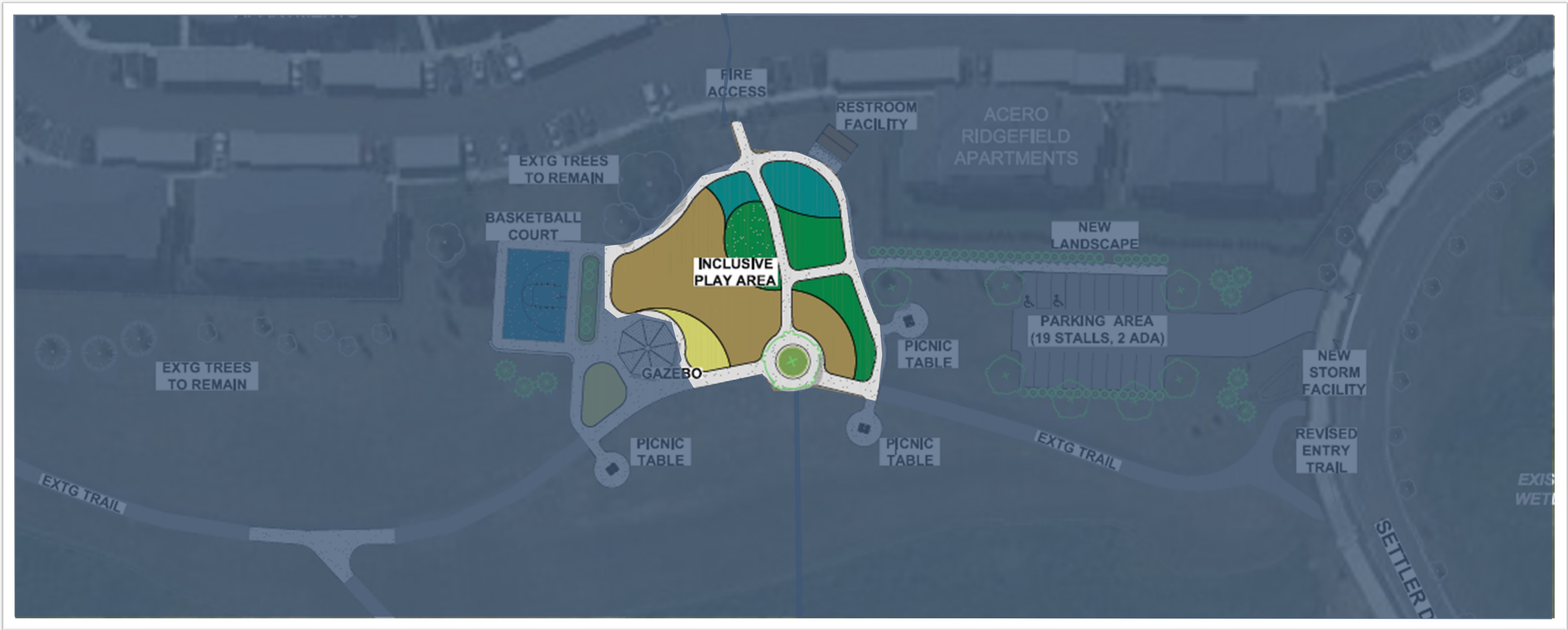
5. Project Design

Existing Conditions



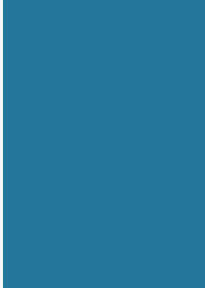
5. Project Design

Horn's Corner Park Master Plan – Current RCO Proposal



5. Project Design

Horn's Corner Park Master Plan – Current RCO Proposal



5. Project Design

Horn's Corner Park Master Plan – Current RCO Proposal



5. Project Design

Horn's Corner Park Master Plan – Future Phases to Support Park

Outdoor Sports Court



Accessible Restrooms



Wetlands Boardwalk



Outdoor Pavilion



5. Project Design

Horn's Corner Park Master Plan -Parking Plan and Access

Plans Already Completed

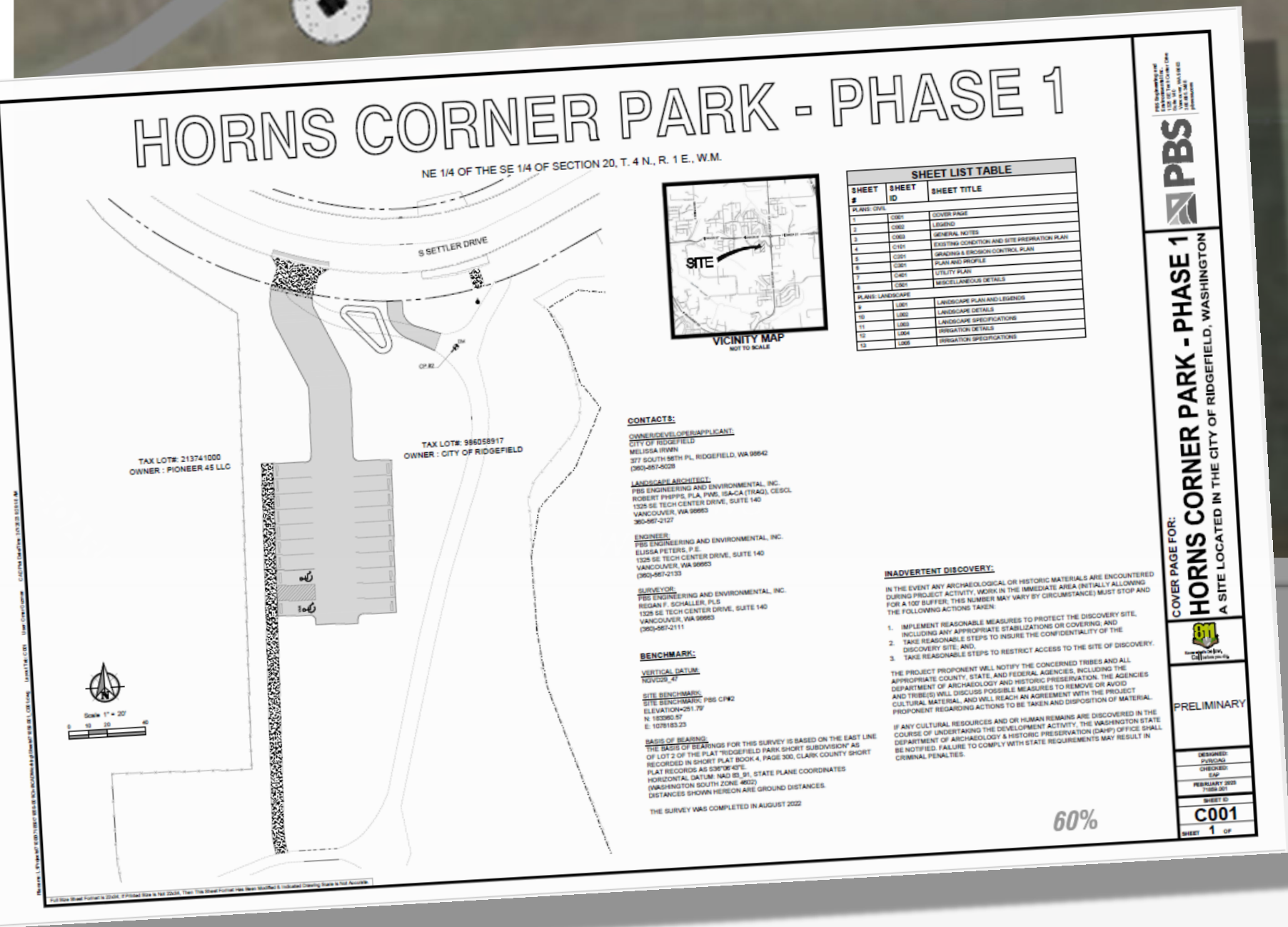
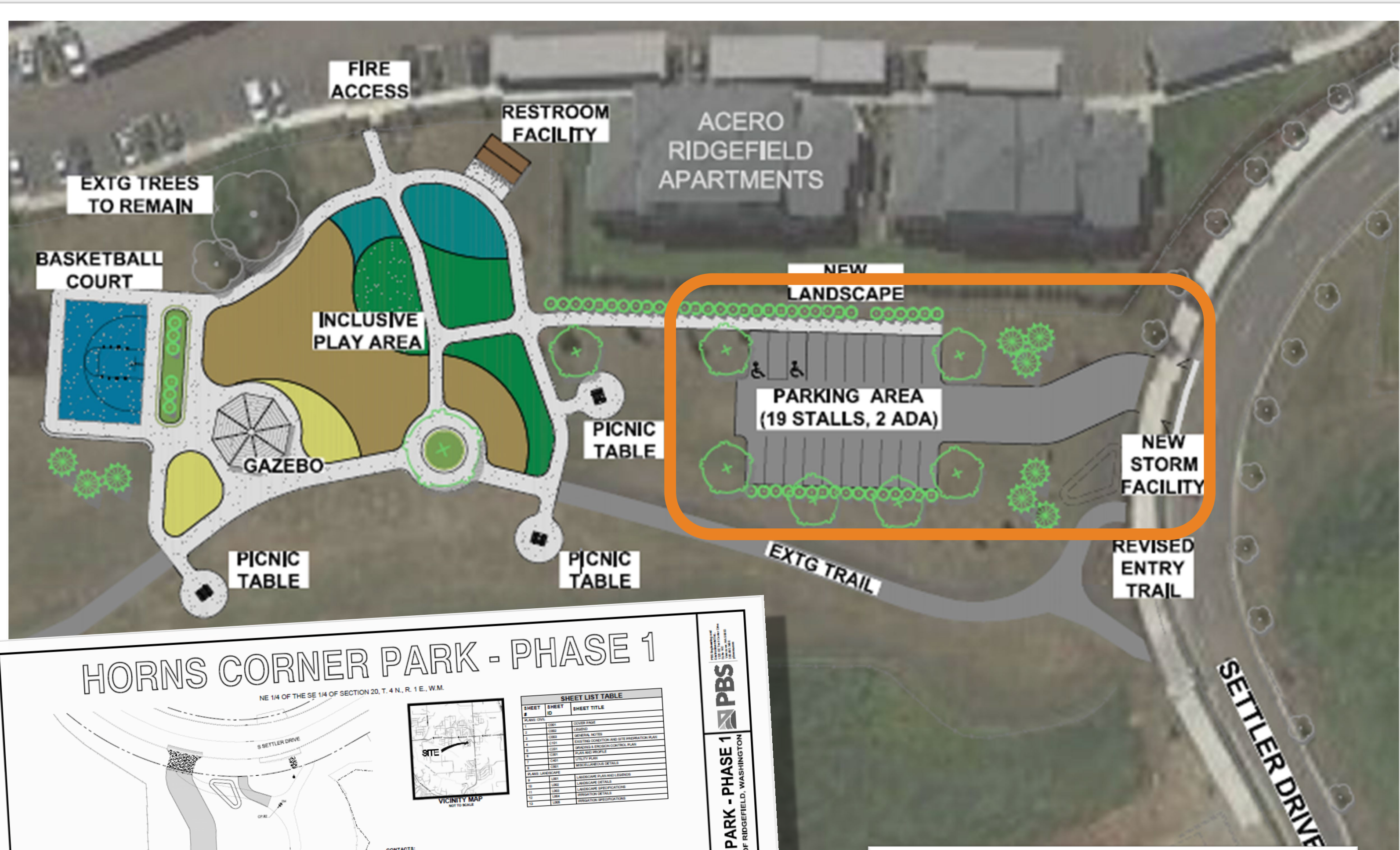
- The City has parking lot plans in hand to support future park development and access to the inclusive design playground.

Essential for Inclusive Access

- The City recognizes that parking is imperative for the playground to function successfully and provide safe, convenient access for families and visitors.

Funding Pursued Separately

- The City is seeking funding for the parking lot through other sources, with the goal of coordinating construction with the playground improvements.



6. Project Budget

Project Budget Overview

Summary

- Total Est. AA&E - \$120,000
 - 19.00% (20.00% Max)
- WWRP Request - \$375,000
 - 50% of overall project
- Total City Match - \$375,000
 - 50% of overall project

Horn's Corner Inclusive Design Playground		
Category	Work Type	Estimated Cost
Cultural Resources		
	Cultural resources	\$ 8,000
General Site Improvements		
	Develop circulation paths or access routes	\$ 77,000
	Installing lighting (general security)	\$ 3,600
	Install signs/kiosk	\$ 3,400
	Install site furnishings	\$ 9,800
	Landscaping improvements	\$ 10,500
Permits		
	Obtain permits	\$ 10,000
Play Areas		
	Playground development	\$ 387,700
Site Preparation		
	General site preparation	\$ 120,000
		Subtotal \$ 630,000
Admin, Architecture, and Engineering		\$ 120,000
		Total Estimate For Worksite \$ 750,000

7. Project Engagement

Community Engagement Methods

Engaged Board & Council

- Convened a combined special work session to gather direction and shape the public survey.

Expanded Public Awareness

- Shared project information, timelines, and participation opportunities through Ridgefield Roundtable.

Collected Communitywide Input

- Launched an online survey to capture needs, values, concerns, and recreation preferences.

Hosted In-Person Engagement

- Facilitated public open houses to present project concepts, answer questions, and gather direct feedback.

Conducted Targeted Outreach

- Met directly with key park users and interest groups through phone and video meetings to better understand specific needs.



8. Project Engagement

Community Influence on Project Design

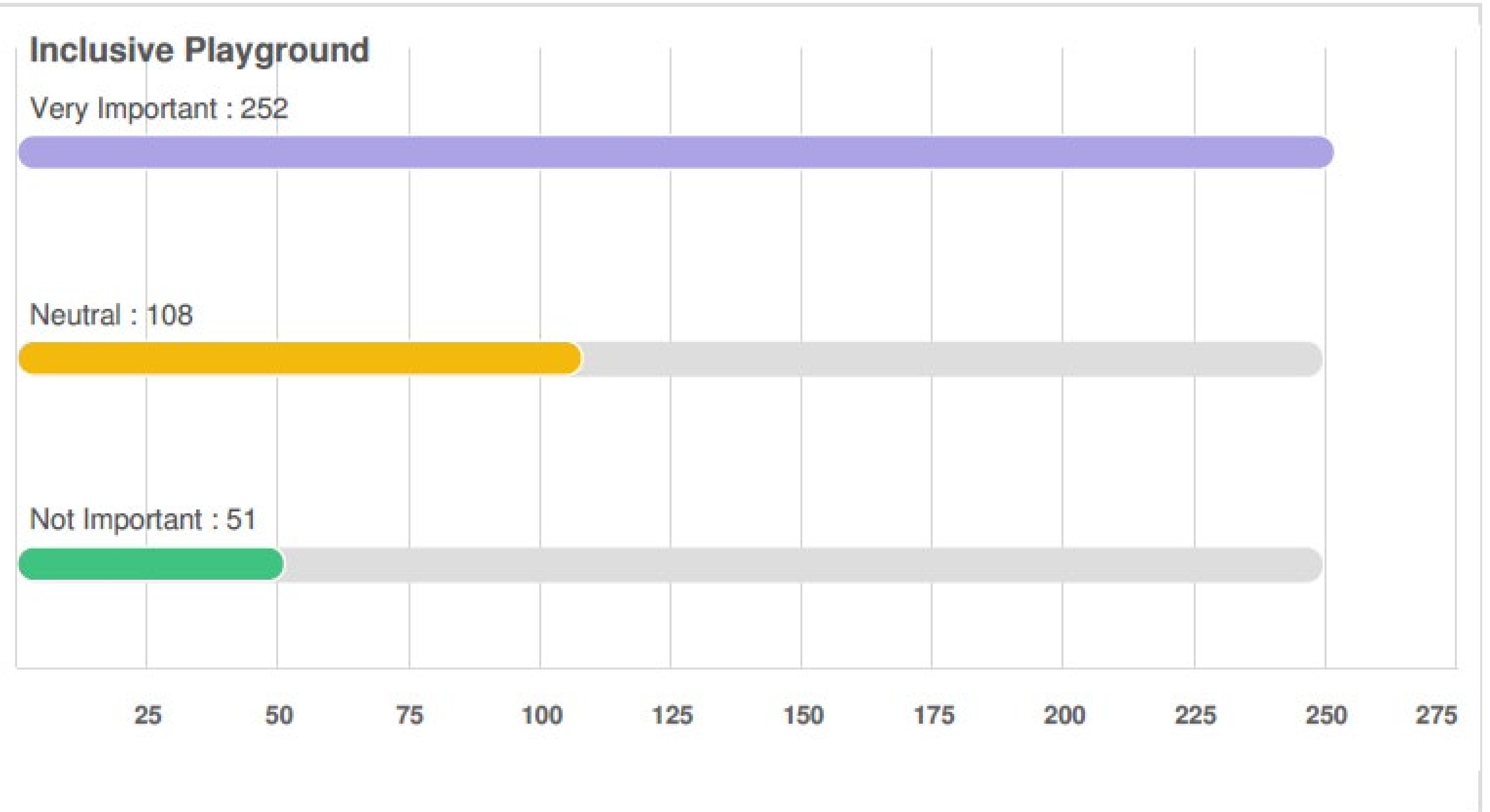
Community Surveys

- Master Planning and Surveys has consistently concluded the communities desire for inclusive-design in our park.

City Vision and Values

- City Council and the Parks Board of Commissioners have consistently reaffirmed their commitment to inclusive design play.
 - Update of Engineering Standards in 2025 to include inclusive-design principles in playground design.
 - City Comprehensive Planning has consistently shown inclusivity as a value of the community.

Q2 | Some of the amenities or elements below have been identified to be incorporated into the design, we would like to gauge you...



**Horns Corner Park Survey : Survey Report for 08 February 2022 to 18 February 2022*

8. Project Engagement

Partnerships

Community-Based Collaborations

- The City is coordinating with local partners who serve families, youth, recreation users, and the broader Ridgefield community.



Design Informed by Lived Experience

- Peace NW has provided input to help ensure the playground better supports individuals with disabilities and reflects the needs of the disability community.



Stronger Long-Term Outcomes

- Partnerships help strengthen project planning, improve community support, and ensure the playground becomes a meaningful and well-used public amenity.



10. Sustainability

Ecological Factors

Reduces Site Impacts

- Incorporates drainage and surface improvements to manage runoff, limit erosion, and support the transition from passive use to more active recreation.

Enhances the Natural Setting

- Uses native planting where possible to preserve the park's character, support habitat value, and soften the playground's integration into existing landscape.

Supports Long-Term Stewardship

- Aligns playground improvements with the park's Resource Management Plan to protect existing assets, plan for maintenance needs, and respond to future community growth.



10. Sustainability

Social Factors



Greater Social Connectivity in Ridgefield

Healthy Lifestyles

- Promotes healthy lifestyles through physical activity and social/cultural connections.

Inclusivity & Belonging

- Promotes inclusivity for individuals with disabilities and their families.

Access & Connection

- Improvements to access on trail promotes greater connectivity between neighbors and amenities critical to civic life.

10. Sustainability

Economic Factors

Driving Smart Growth

Local Development

- Adds a high-quality inclusive playground that strengthens the park as a regional destination for families and visitors.

Activity Opportunities

- Creates a welcoming space that can support community events, youth programs, and family-focused activities for all generations.

Economic Vitality

- Invests in modern, accessible amenities that improve quality of life, support community growth, and help attract residents, visitors, and businesses.



11. Cost Efficiencies

Stewardship of Funds



Stretching Public Dollars

Leveraging Multiple Funding Sources

- Combines local appropriations, grant support, donations, and in-kind contributions to reduce reliance on single funding source.

Maximizes Community Investment

- Uses volunteer support and partnership to stretch public dollars and increase the overall value of the project.

Economic Vitality

- Incorporates durable materials and design choices that minimize further construction, repair, and maintenance expenses.



Contact Us

*Public Works Department
Parks, Trails, and Recreation Division*

Corey Crownhart

Title: Parks Manager

Phone: (360) 857-5036

Email: Kristen.Lashua@ridgefieldwa.us

Thank You

The City of Ridgefield, Washington

**CITY OF RIDGEFIELD
REQUEST FOR BOARD ACTION**

MEETING DATE: May 13, 2026

AGENDA ITEM NAME: 2026 Parks, Recreation, and Open Space (PROS) Plan - Overview of Scope of Work

SUMMARY/BACKGROUND:

The City is preparing to begin the 2026 Parks, Recreation, and Open Space (PROS) Plan Update. The PROS Plan is the City's primary guiding document for long-term planning, development, maintenance, and investment in Ridgefield's parks, trails, recreation facilities, natural areas, and open space system.

The 2026 update will provide an opportunity to evaluate existing park and trail assets, assess current and future community recreation needs, review level-of-service standards, identify system gaps, and establish updated priorities for capital investment and implementation. The scope of work will also include community engagement, recreation programming analysis, trail connectivity planning, asset preservation considerations, and recommendations related to long-term financial sustainability.

This agenda item is informational only and provides Council with an overview of the anticipated scope of work, planning process, and key focus areas for the PROS Plan Update. No action is requested.

STAFF CONTACT: Corey Crownhart, Park Manager

ATTACHMENTS:

None

**CITY OF RIDGEFIELD
REQUEST FOR BOARD ACTION**

MEETING DATE: May 13, 2026

AGENDA ITEM NAME: Motion - Approval of 2026 Parks Board Work Plan Quarter 1 Report

SUMMARY/BACKGROUND:

The City Council adopted the 2026 Parks Board of Commissioners Work Plan in January 2026. As specified in the Work Plan, the Parks Board is tasked with providing a quarterly report on the progress of that Work Plan. The Parks Board is asked to consider the provided 2026 Parks Board Work Plan Quarter 1 Report.

Potential Action or Motion:

"I move to approve the 2026 Parks Board Work Plan Quarter 1 Report as presented."
(If recommending inclusions, amendments, or removals, state these changes with the motion.)

STAFF CONTACT: Corey Crownhart, Park Manager

ATTACHMENTS:

1. DRAFT-2026.Parks.Board.Work.Plan.Q1.Report-2026.05.13



2026 Parks Board Work Plan – Quarter 1 Report

City of Ridgefield – Parks Board of Commissioners

Chair: Brigid Taylor

Vice-Chair: Sandy Shill

Members: Beth Bicknell, Alex Earl, Elianna Galvan, Jessica Pace, and John Rafanelli

Overview

Q1 focused on Board organization and preparation for upcoming 2026 work plan items. At the January 14 meeting, the Board elected Brigid Taylor as Chair and Sandy Shill as Vice-Chair, approved the 2025 Annual Report, and recommended the 2026 Work Plan by a 7-0-0 vote.

The February meeting was cancelled due to limited business. At the March 11 meeting, the Board discussed the upcoming PROS Plan and State of the City event. The April meeting is scheduled to be cancelled due to the Parks Manager attending the WRPA Annual Conference.

Most 2026 Work Plan items remain on track and are expected to begin or advance later in the year.

Work Plan Progress

Parks, Recreation & Open Space Plan Update – Pending / On Track

The Board discussed the upcoming PROS Plan in March. The consultant-led process has not formally started. The Board will serve as a review body as the process moves forward.

Park Preservation Program – Pending

No Q1 action. This item is expected later in 2026.

Parks and Trails System Tour – Pending

No Q1 action. This item remains planned for later in 2026.

Public Engagement Support – On Track

The Board discussed the State of the City event in March. Engagement support will continue throughout the year.

Parks Revenue Program Implementation Support – Pending / On Track

No Q1 action. This item is expected to come forward later in 2026.

User Agreement and Shared-Use Agreement Review – Pending

No Q1 action. This item is expected to come forward later in 2026.

Capital Project Support – On Track

No formal capital project action were requested in Q1. Staff will continue to provide updates and request feedback at key points.