



**RIDGEFIELD ROUNABOUT COMMITTEE  
MEETING AGENDA**

**Monday, December 8, 2025  
RACC - Columbia Assembly Room  
510 Pioneer Street, Ridgefield, WA 98642**

**I. GENERAL SESSION CALL TO ORDER - 6:30 PM**

- 1. Flag Salute**
- 2. Roll Call**
- 3. Late changes to the agenda**

**II. CONSENT AGENDA**

- 1. Approval of Minutes from the November 3, 2025 Meeting**

**III. PUBLIC COMMENT**

Anyone requesting to speak to the Committee regarding all items not subject to a specific Public Hearing may come forward at this time. Please state your name and limit comments to three minutes. Written comments may be submitted to the Clerk prior to the meeting.

**IV. BUSINESS**

- 1. Progress update for the design of S. Wells/S. Royle - Miranda Lange, PW Infrastructure Deputy Director**
- 2. History of Roundabouts for website - Miranda Lange, PW Infrastructure Deputy Director**
- 3. Review design approach - Miranda Lange, PW Infrastructure Deputy Director**

**V. STAFF REPORTS**

**VI. FROM THE COMMITTEE**

**VII. ADJOURN**

**CITY OF RIDGEFIELD  
REQUEST FOR BOARD ACTION**

**MEETING DATE:** December 8, 2025

**AGENDA ITEM NAME:** Approval of Minutes from the November 3, 2025 Meeting

---

**SUMMARY/BACKGROUND:**

**STAFF CONTACT:**

**ATTACHMENTS:**

1. Roundabout Committee Minutes 11-10-2025



**CITY OF RIDGEFIELD, WASHINGTON  
ROUNDBOUT COMMITTEE MEETING MINUTES  
NOVEMBER 10, 2025**

**Regular Meeting - 6:30 PM**

**I. GENERAL SESSION CALL TO ORDER - 6:30 PM**

- 1. Flag Salute**
- 2. Roll Call**

<p><b>Present:</b> Committee Member Kelley McMorris Committee Member Tim Shell Committee Member Kathleen Huber Committee Member Dan Mittelstadt</p> <p><b>Absent:</b> Chair, Heather Gordon</p>
---

MOTION TO EXCUSE CHAIR, HEATHER GORDON.

<p><b>RESULT:</b> UNANIMOUS <b>MOVER:</b> Committee Huber <b>SECONDER:</b> Committee Member Shell <b>AYES:</b> Committee Member McMorris, Committee Member Shell, Committee Member Huber, Committee Member Mittelstadt</p>
--

**3. Late changes to the agenda**

(None noted)

**II. CONSENT AGENDA**

**1. Approval of Minutes from the October 13, 2025 Meeting.**

MOTION TO APPROVE AS PRESENTED.

<p><b>RESULT:</b> UNANIMOUS <b>MOVER:</b> Committee Member Shell <b>SECONDER:</b> Committee Member McMorris</p>
---

<b>AYES:</b> Committee Member McMorris, Committee Member Shell, Committee Member Huber, Committee Member Mittellstadt
---

**III. PUBLIC COMMENT**

Anyone requesting to speak to the Committee regarding all items not subject to a specific Public Hearing may come forward at this time. Please state your name and limit comments to three minutes. Written comments may be submitted to the Clerk prior to the meeting.

**IV. BUSINESS**

**1. Progress Update for design of S. Wells/S. Royle - Miranda Lange, PW Infrastructure Deputy Director**

Committee Member Kelley McMorris shared concept sketches based on prior discussions. Miranda Lange will forward the concepts to Nature Play Design’s Jane Tesner Kleiner for incorporation into the design to be presented to the Ridgefield City Council.

**2. History of Roundabouts on website - Miranda Lange, PW Infrastructure Deputy Director**

Carson Teuscher, a prospective member of the Ridgefield Historical Society, presented historical information and proposed ideas for future collaboration.

Miranda Lange reported that the history of the City’s roundabouts has been approved for posting on the City website.

**3. Continuation of work/review on design approach - Miranda Lange, PW Infrastructure Deputy Director**

Discussion continued regarding the Ridgefield Roundabout design approach.

**V. STAFF REPORTS**

The contractor will pour the foundation and install the artwork in the 50th Roundabout following Thanksgiving.

The Ridgefield Art Association may serve as a resource for future art installations.

**VI. FROM THE COMMITTEE**

**VII. ADJOURN**

7:26 pm

---

Diana Allen, Clerk

---

Chair

**CITY OF RIDGEFIELD  
REQUEST FOR BOARD ACTION**

**MEETING DATE:** December 8, 2025

**AGENDA ITEM NAME:** Progress update for the design of S. Wells/S. Royle

---

**SUMMARY/BACKGROUND:**

**STAFF CONTACT:** Miranda Lange, PW Infrastructure Deputy Director

**ATTACHMENTS:**

1. Ridgefield Roundabout project FINAL Concept 12.8.25



S. ROYLE ROAD &  
S. WELLS DRIVE / S. 15TH STREET

**ROUNDAABOUT  
CONCEPTUAL DESIGN - FINAL**

Plans prepared for:  
City of Ridgefield - Public Works  
Ridgefield Roundabout Citizen Committee

DRAFT v. December 8, 2025

# PROJECT BACKGROUND

## PROJECT GOALS

The City of Ridgefield, WA (City) has planned road improvements to support continued residential and commercial growth in the city limits. A part of the growth, the City is using roundabouts as a means of traffic control.

This project at the intersection of S. Royals Rd. and S. Wells Dr. is a medium sized roundabout serving primarily resident neighborhoods and through traffic to the high school and sports complex to the south and a mixed use commercial district to the north.

This round shall have a theme that is different than many of the existing roundabout in Ridgefield. While situated in historic agricultural areas and farms, it will celebrate the history of the area, both agriculturally and the native habitat environment that is common in Ridgefield.

## PROJECT OBJECTIVES

As part of this project, input will include the City of Ridgefield Public Works (CORPW) director, CORPW Head of Transportation Maintenance and the City's residential advisory roundabout committee. Here are some of the key objectives identified by the participants to date, knowing more input will be forthcoming:

- **Low maintenance** - select plants that have an aesthetically pleasing mature shape that does not need pruning
- **Visual support** - use plant materials to block views of on-coming headlights to increase safe driving conditions
- **Use of native plants** - select plant materials that provide year round aesthetic appeal as well as supportive to the ecosystem health of the area. Use a mix of evergreen (keeps leaves all year) and deciduous (loses leaves)
- **Celebrate and enhance the neighborhood** - choose a plant layout and design that blends with the neighborhood and overall community

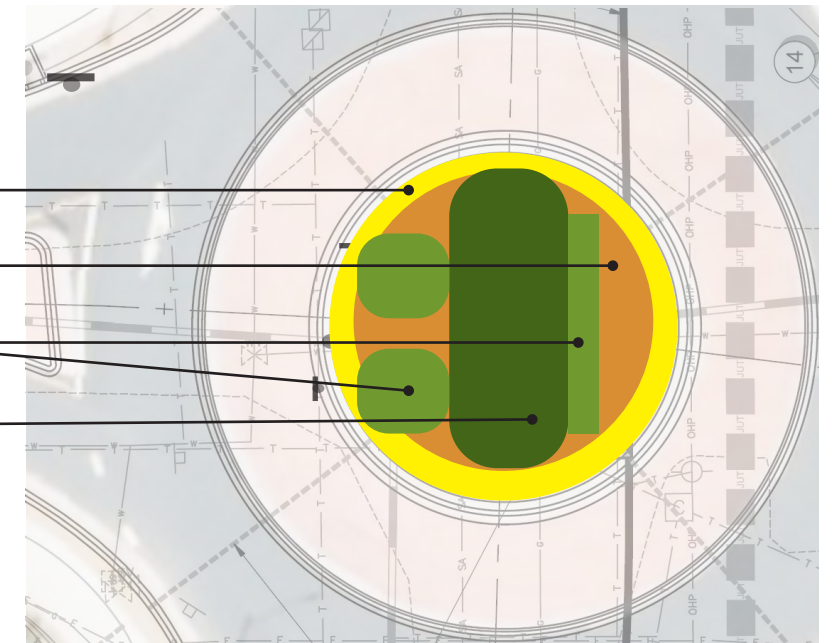
**Concept B** has medium height by using medium height deciduous trees that have excellent spring and fall colors as the highlights. Large shrubs create a dense cluster of different flowering plants with accenting color combinations. The whole perimeter is a blend of low evergreen plantings such as sedum and buckbrush, with occasional perennials adding accent colors, such as camas, yarrow, and pearly everlasting. This concepts represents layers of habitat:

- **Overstory trees** - Oak or Maple
- **Large shrubs** - Red-flowering currant, Tall Oregon Grape
- **Low shrubs** - Evergreen huckleberry, Douglas spirea, Buckbrush
- **Groundcover** - Klnnikinnick, Camas, Stonecrop, etc.

Intermix evergreen with deciduous for diversity of habitat and colors. Use plants with interesting branching such as manzanita and dogwood. Densely plant at the on-set as it will take awhile for the plants to reach maturity.

## PREFERRED - CONCEPT B PLAN VIEW

- Groundcover - less than 18"
- Low shrubs - 18" - 48"
- Large shrubs - 4' - 8'
- Overstory - above 20'



## VIEW LOOKING EAST

- Overstory trees
- Large shrubs
- Low shrubs
- Groundcover



## DESIGN PRINCIPLES:

Focus on adding native/pollinator beneficial, especially a wide variety of pollinator species (e.g. bees, butterflies, etc.)

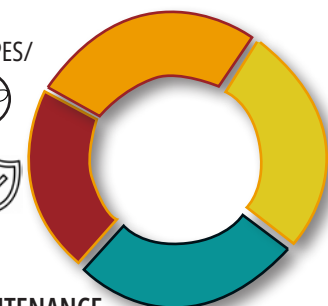
**POLLINATOR FRIENDLY**  
EXTENDED BLOOM TIMES, DIVERSE FLOWER SHAPES/  
COLORS FOR HUMMINGBIRDS



**SAFETY & SECURITY**  
MAINTAIN SAFE ACCESS,  
CLEAR VIEWS AROUND THE SITE



**LOW MAINTENANCE**  
MINIMAL TRIMMING REQUIRED, BLOCK  
WEED GROWTH & DROUGHT TOLERANT



**GREAT CURB APPEAL**  
LOOKS GREAT YEAR ROUND, WITH  
DIVERSITY OF FLOWERS, COLORS,  
TEXTURES AND INTEREST

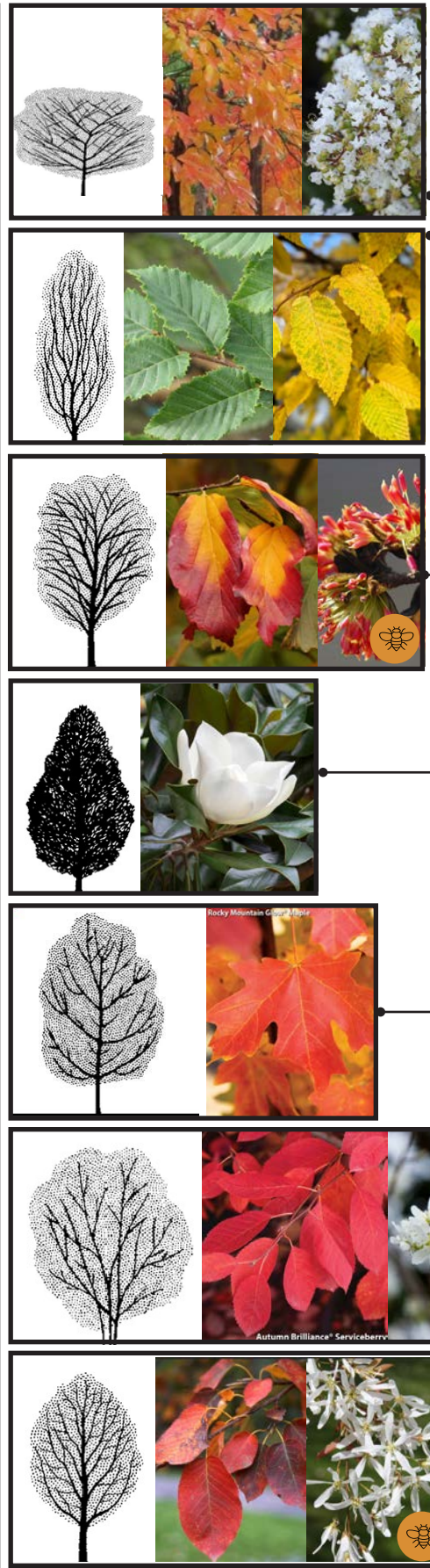
# PROPOSED FINAL LAYOUT

## RECOMMENDATION FOR TREES

Source: City of Vancouver Approved Street Tree List (selected)

Common Name Variety	Scientific Name	Height (Feet)	Width (Feet)	Form	Features and Considerations	Drought Tolerant	OK under HV Wires?	Soil Type
Natchez Crape Myrtle	<i>Lagerstroemia indica x fauriei 'Natchez'</i>	25	20	rounded	White floral clusters; exfoliating bark	✓	✓	all
Frans Fontaine Hornbeam	<i>Carpinus betulus 'Frans Fontaine'</i>	35	15	upright/columnar	Heat tolerant; low maintenance	✓	⊘	all
Vanessa Persian Ironwood	<i>Parrotia persica 'Vanessa'</i>	25	14	upright/columnar	Red winter flowers, orange fall color	✓	✓	drained
Edith Bogue Magnolia	<i>Magnolia grandiflora 'Edith Bogue'</i>	35	15	tightly pyramidal	Glossy evergreen leaves; white flowers	✓	⊘	drained
Rocky Mountain Glow Maple	<i>Acer grandidentatum 'Schmidt'</i>	25	15	oval	Orange/red fall color	✓	✓	drained
Autumn Brilliance Serviceberry	<i>Amelanchier × grandiflora 'Autumn Brilliance'</i>	25	25	upright oval	White flowers; berries; orange-red fall color	✓	✓	all
Spring Flurry Serviceberry	<i>Amelanchier laevis 'JFS-Arb'</i>	35	20	upright oval	White flowers; berries; strong central leader	✓	✓	all

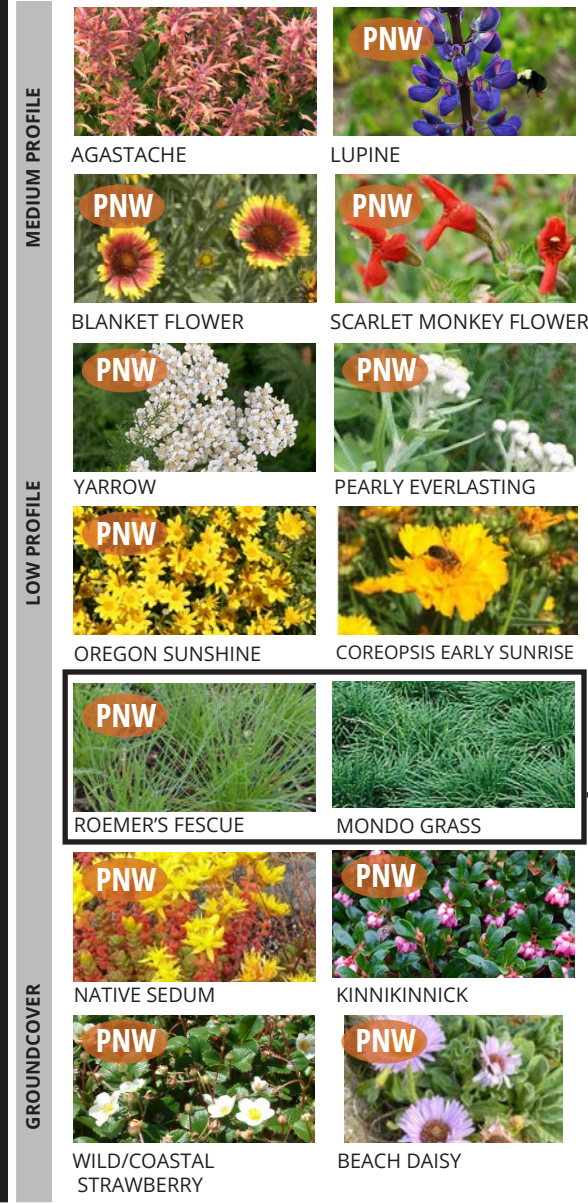
SMALL TREES



SHRUBS



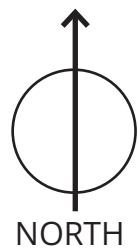
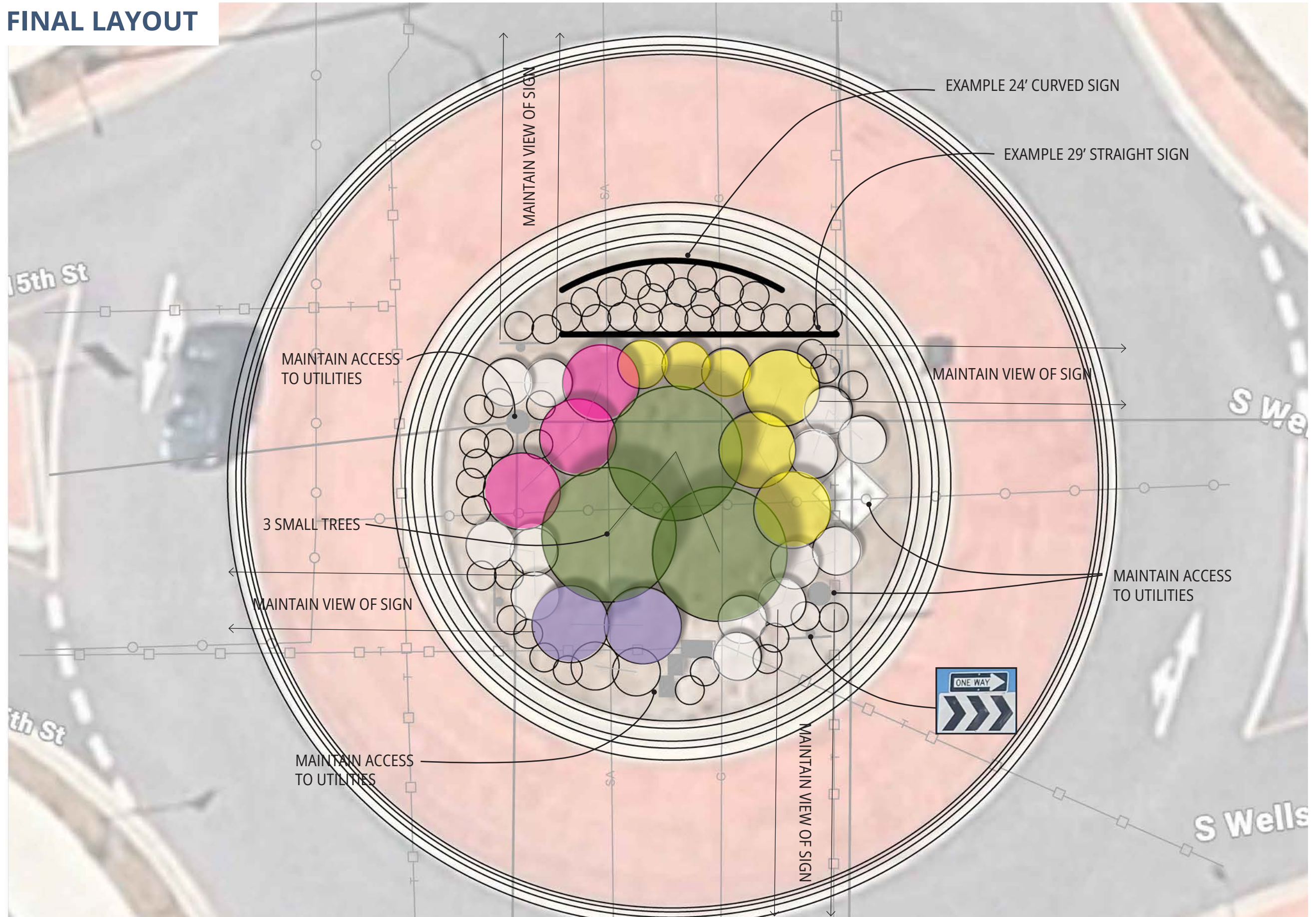
GROUND COVER / PERENNIALS



### PLANT SELECTION:

- **Tree:** Choose the preferred tree variety. Those listed above have a variety of features that would work well (drought tolerant, three season color/interest. The icon means that it is also pollinator beneficial.
- **Shrubs:** There is room for three varieties of tall shrubs clustered together. The plan is then cluster the smaller shrubs in groups of 3 or 5 together around the perimeter.
- **The groundcover / perennials** (plants that come back every year) will be planted in clusters closer to the knee wall.
- **In front of the artwork,** tall and low evergreen grasses will support the theme of the art (fields and plowed fields)

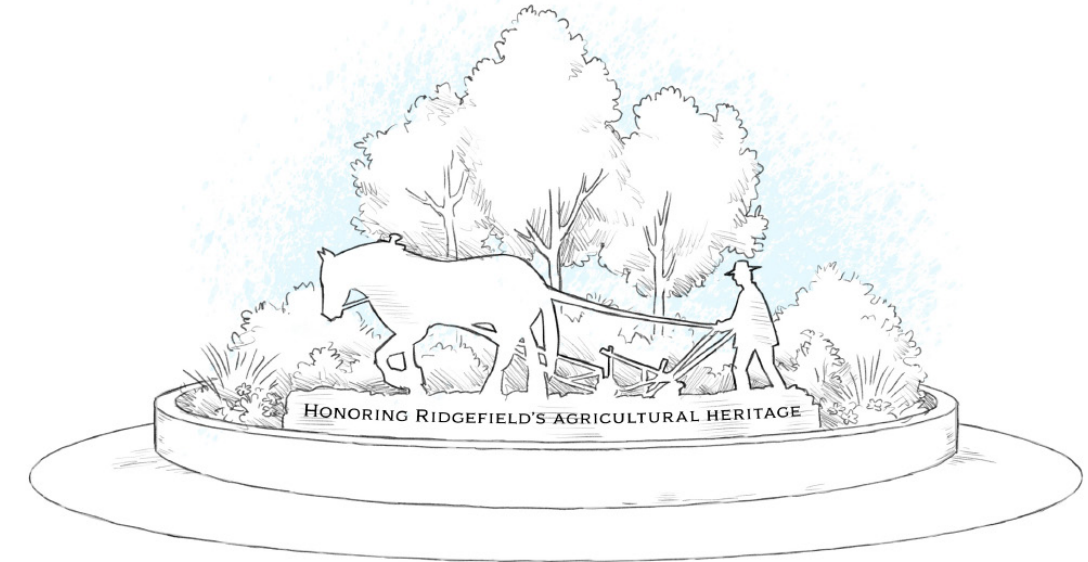
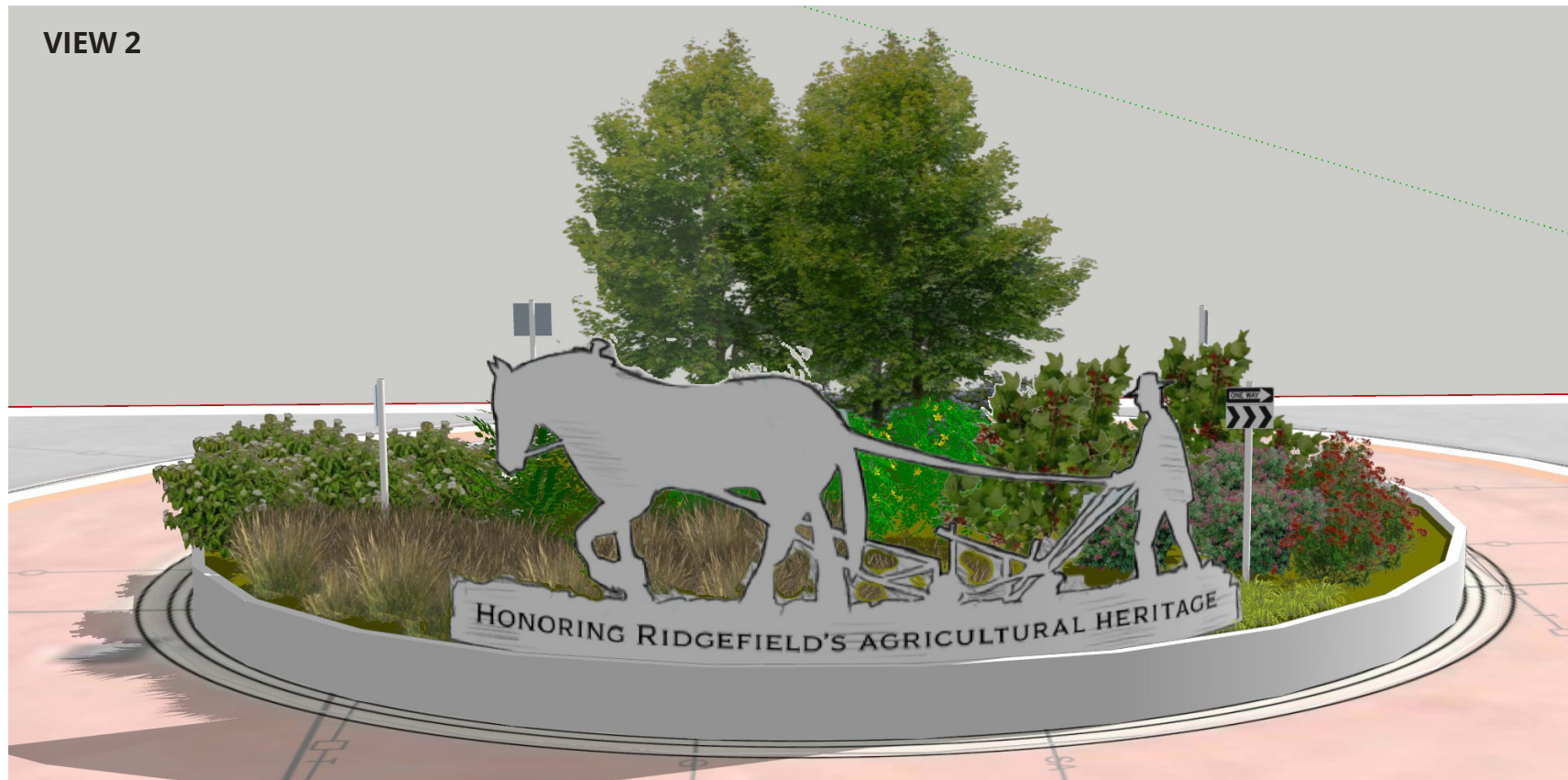
# PROPOSED FINAL LAYOUT



VIEW 1



VIEW 2



**ART LAYOUT OPTIONS:**

The art panel in View 1 is a flat art piece that is about 29' long. This option would allow low flowering plants and grass in front of the sign soften the edge and giving a sense that the farmer and horse are in the field working. This option may need to have a taller base under the words to allow for the plants to mature (approximately 18") while not blocking the letters

The art panel in View 2 is the curved near the top of the knee wall. This option ensures that the words are always visible as no plants will be in front of the sign. Note in this view, the flowering tree has been replaced by a small maple tree, as noted in the plant list.

**CITY OF RIDGEFIELD  
REQUEST FOR BOARD ACTION**

**MEETING DATE:** December 8, 2025

**AGENDA ITEM NAME:** History of Roundabouts for website

---

**SUMMARY/BACKGROUND:**

Development of content for the history of the roundabout designs within the City of Ridgefield.

**STAFF CONTACT:** Miranda Lange, PW Infrastructure Deputy Director

**ATTACHMENTS:**

None

**CITY OF RIDGEFIELD  
REQUEST FOR BOARD ACTION**

**MEETING DATE:** December 8, 2025

**AGENDA ITEM NAME:** Review design approach

---

**SUMMARY/BACKGROUND:**

Review the design approach document and decide if any changes need to be made.

**STAFF CONTACT:** Miranda Lange, PW Infrastructure Deputy Director

**ATTACHMENTS:**

1. Draft Design Approach

# Ridgefield Roundabouts Design Approach

## Purpose

This document outlines the design approach for Ridgefield's roundabouts, focusing on safety, landscaping, art, lighting, irrigation, and maintenance. The goal is to create functional, safe, and visually appealing roundabouts that reflect Ridgefield's identity while ensuring long-term sustainability.

## Safety:

- Incorporate **knee walls** to slow errant vehicles and protect art and plantings.
- Ensure design elements do not encourage pedestrians to enter the roundabout.

## Landscaping:

- **Extensive use of native plants:**
  - Lower maintenance (minimal pruning).
  - Low water use, once established.
  - Supports pollinators, birds, and local wildlife.
- **Design principles:**
  - Natural forest floor approach. See the Maintenance Section below for more details on natural forest floor.
  - Wide diversity of native plantings.
  - Sustainable species with non-invasive roots.
  - Seasonal and year-round interest.
- **Additional features:**
  - Use of boulders and logs for natural appearance and habitat.

## Art

- **Design goals:**
  - Creating beauty while reminding and informing the community of local history.
  - Support local artists.
  - Provide visual interest without distracting drivers.
- **Specifications:**
  - Scalable and vertical, easily visible from a distance.
  - Non-reflective materials.
  - Low maintenance.
  - Avoid interactive features (e.g., stairs, booths).

## Lighting and Irrigation --

- Tailored to each roundabout's design, location, and purpose.

- Flexible approach depending on specific goals.
- Compliant with city codes and regulations (no up-lighting)

## General Design Themes:

The general design themes t in all roundabouts should establish unity through:

- Consistent use of native plants.
- Thematic elements tied to Ridgefield's identity (e.g., native birdlife, wildlife refuge, historic events and activities, etc.).
- It is encouraged to use roundabout design to tell the story of Ridgefield's heritage, past and present, from agricultural roots to a small city with commercial activity.

## Maintenance Standards:

- Adopt a **forest floor concept**:
  - Allow leaves and plant matter to decompose naturally.
  - Maintain soil quality, reduce evaporation, and provide insect habitat.
  - Minimal blowing; no annual bark dust application.
  - Encourage plants to fill in naturally, shading out weeds.
- Ensure:
  - Ease of access for water, sewer, and utilities.
  - Plant resilience against weather events.
  - Accessibility for vegetation and utility maintenance.

## Conclusion

- This design approach emphasizes safety, sustainability, and storytelling. By integrating native plants, local art, and thoughtful maintenance practices, Ridgefield's roundabouts will serve as functional infrastructure while celebrating the city's identity and growth.